



8 C Vermont Close, Talbot Close, Southampton, SO16 7LT

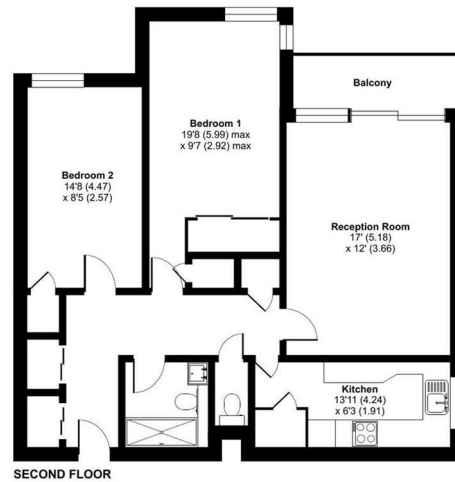
**£175,000**



- NO FORWARD CHAIN
- Large Two Bedroom Property With Balcony From Living Room
- Garage
- Lift Access To Upper Floors
- Council Tax Band B
- 949 Year Lease
- Modernised Bathroom
- High Security Entry System & CCTV In Communal Areas
- Off Road Parking
- Call 01202 117288 To Enquire

### Vectis Court, Talbot Close, Southampton, SO16

Approximate Area = 819 sq ft / 76 sq m  
For identification only - Not to scale



Floor plan produced in accordance with RICS Property Measurement Standards incorporating International Property Measurement Standards (IPMS2 Residential). © mitchem 2025. Produced for 360 Properties. REF: 1344593

## THE PROPERTY

Nestled in the desirable area of Vermont Close, Talbot Close, Southampton, this charming two-bedroom apartment offers a perfect blend of modern living and convenience. With a generous 949-year lease, this property is an excellent opportunity for both first-time buyers and working professionals.

This home features a fully modernised bathroom, ensuring a fresh and contemporary feel. The spacious layout is designed to maximise comfort and functionality, making it an ideal home for small families or professionals.

The property includes off-road parking, providing ease and security for residents. Additionally, the inclusion of a garage adds further convenience, offering ample storage space or the potential for a workshop.

Accessibility is a key advantage, with a lift servicing all floors, making it suitable for individuals of all ages and mobility levels.

This property promises a comfortable lifestyle in a vibrant community. With its modern amenities and prime location, it is a must-see for anyone seeking a delightful living space in Southampton.

Call 01202 177288 to enquire.

## SITUATION

## Directions

Market House Market Sq, Aylesbury, HP1201TN

Tel: 01296 767555 Email: [francis@360-properties.co.uk](mailto:francis@360-properties.co.uk) <https://www.360-properties.co.uk>